



PA-14P LINEAR ACTUATOR WITH POTENTIOMETER

HOW TO ORDER

1.800.676.6123

SALES@PROGRESSIVEAUTOMATIONS.COM

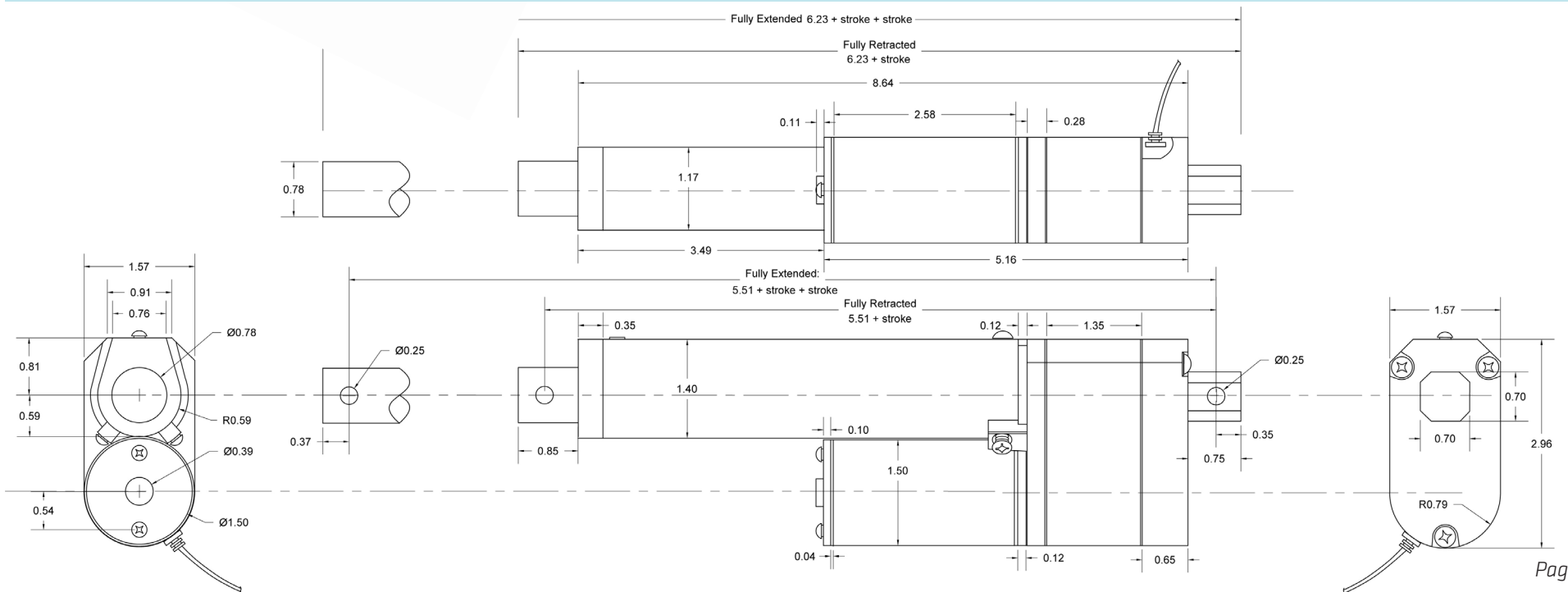
WWW.PROGRESSIVEAUTOMATIONS.COM

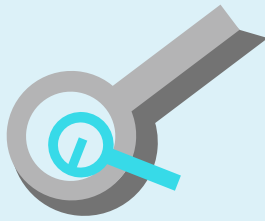


SPECIFICATIONS

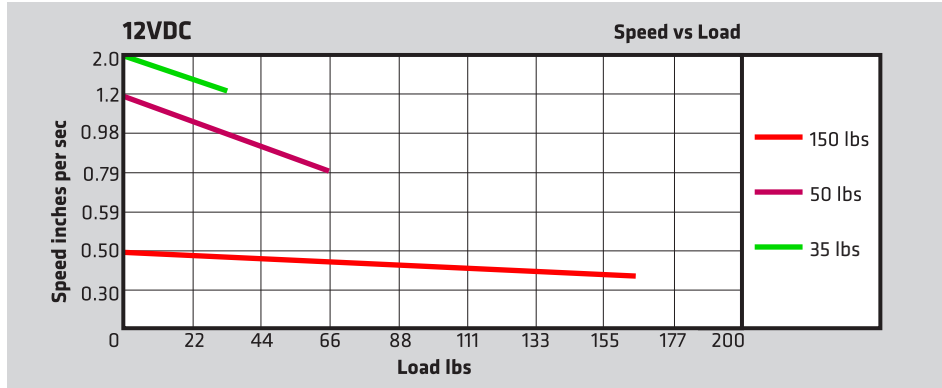
- Input Voltage: 12 VDC
 - Current: 5A at full load
 - Load Capacity: 35 lbs, 50 lbs, 150 lbs
 - Static Load: 2 x load
 - Stroke length: 1" to 40"
 - Mounting holes: 0.25" diameter
 - Potentiometer: 10K ohm
 - Screw: ACME Screw
 - Duty Cycle 25%
- Operational Temperature: -26°C~65°C (-15°F~150°F)
 - Limit Switch: built-in non movable
 - IP Grade: IP54
 - Certification: CE and RoHS
 - Housing: 6062 Aluminum Alloy
 - Gears: Powder Metallurgy
 - Wire Length: 40"
 - Gear Ratio: 20:1
- For Custom Options See Page 5**

DIMENSIONS IN INCHES

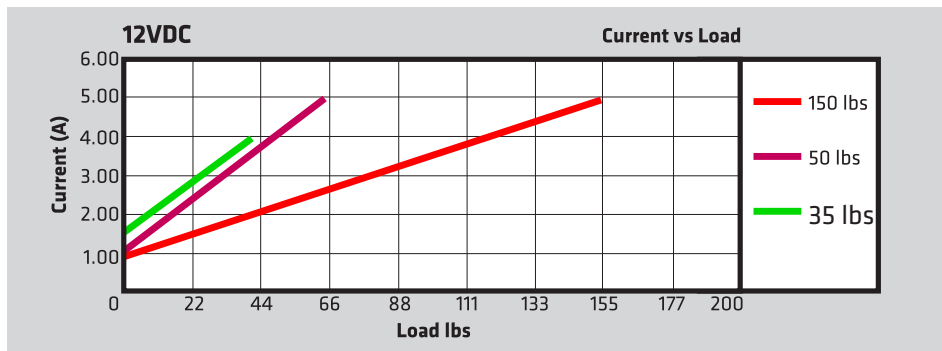




12 VDC SPEED VS LOAD



12 VDC CURRENT VS LOAD



SPEED IN INCHES PER SECOND

Forces (lbs)	No Load	Full Load
35	2.00	1.20
50	1.18	0.94
150	0.59	0.51

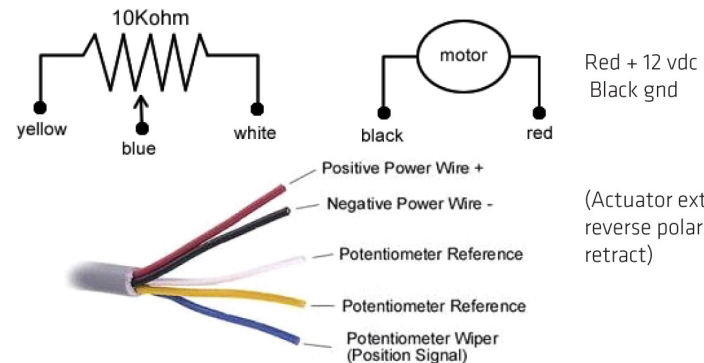
HOLE TO HOLE DIMENSIONS

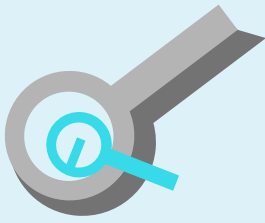
Stroke Sizes (in inches)	PA-14P Model Actuator	
	Fully Retracted (in inches)	Fully Extended (in inches)
0	5.51	5.51
1	6.51	7.51
2	7.51	9.51
3	8.51	11.51
4	9.51	13.51
6	11.51	17.51
8	13.51	21.51
9	14.51	23.51
10	15.51	25.51
12	17.51	29.51
14	19.51	33.51
16	21.51	37.51
18	23.51	41.51
20	25.51	45.51
22	27.51	49.51
24	29.51	53.51
30	35.51	65.51
40	45.51	85.51

PRODUCT ACCESSORIES

- Will work with any PA's AC & DC controls boxes
- Mounting Brackets: BRK-14 (for each end); BRK-03
- Rocker Switches: any PA's Rocker Switches
- Foot Controls: PDL-01, PDL-02 and PDL-03
- Rubber Boot: AC-20

POTENTIOMETER





PA-14P LINEAR ACTUATOR WITH POTENTIOMETER

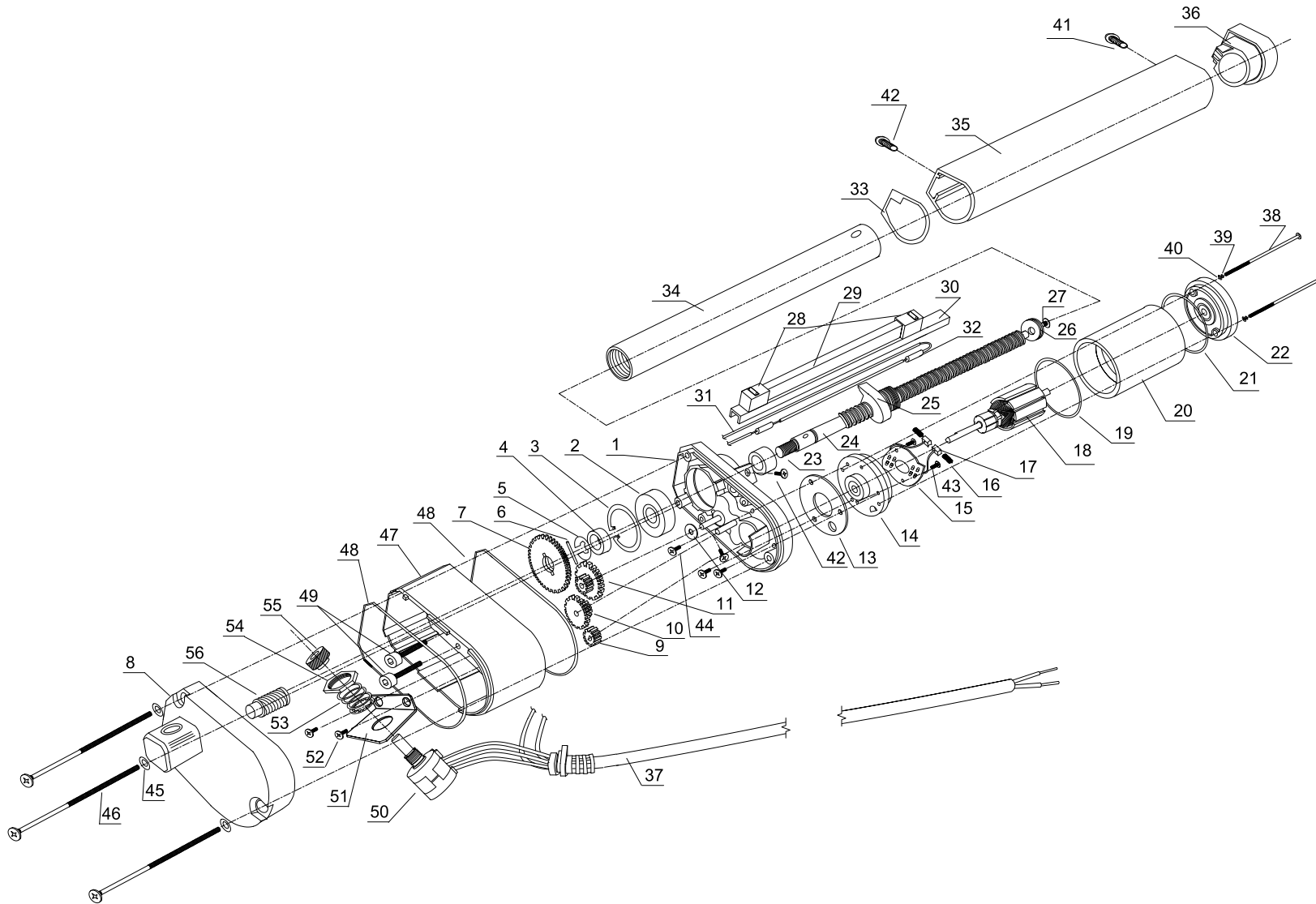
HOW TO ORDER

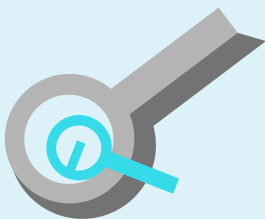
1.800.676.6123

SALES@PROGRESSIVEAUTOMATIONS.COM

WWW.PROGRESSIVEAUTOMATIONS.COM

ACTUATOR INTERNALS





PA-14P LINEAR ACTUATOR
WITH POTENTIOMETER

HOW TO ORDER

1.800.676.6123

SALES@PROGRESSIVEAUTOMATIONS.COM

WWW.PROGRESSIVEAUTOMATIONS.COM

ACTUATOR ASSEMBLY EXPANDED VIEW PARTS DESCRIPTION

Item	Description	Qty
1	Actuator base	1
2	Shaft Bearing	1
3	Shaft Bearing Lock	1
4	Shaft Base Spacer	1
5	Shaft Base Spacer Lock	1
6	Shaft Gear Wheel Holder	1
7	Shaft Gear Wheel	1
8	Base Cover with Mounting Support	1
9	Electric Motor Gear Wheel	1
10	Small Intermediate Gear Wheel	1
11	Medium Intermediate Gear Wheel	1
12	Teflon Washer	1
13	Electric Motor Base Washer	1
14	Electric Motor Base	1
15	Brush Holder PCB	1
16	Electric Motor Brush	2
17	Electric Motor Brush Spring	2
18	Electric Motor Rotor	1
19	Motor Enclosure Bottom Washer	1
20	Electric Motor Encloser with Stator	1
21	Motor Enclosure Top Washer	1
22	Electric Motor Cap with Rotor Bearing	1
23	Shaft Spacer	1
24	Treaded Shaft Drive / Lead Screw	1
25	Shaft Base with Limit Switches Arm	1
26	Shaft Drive End Support	1
27	Shaft Drive End Support Screw	1
28	Limit Switch	2

Item	Description	Qty
29	Limit Switches Spacer	1
30	Limit Switches Base	1
31	Limit Switches Wiring	1
32	Diode	2
33	Shaft Encloser Bottom Washer	1
34	Shaft with Mounting Hole	1
35	Shaft Encloser	1
36	Shaft Enclosure Top Cap	1
37	Power Cable	1
38	Motor Enclosure Screw	2
39	Motor Screw Spring Washer	2
40	Motor Screw Washer	2
41	Shaft Enclosure Top Cap Screw	1
42	Shaft Enclosure Base Screw	3
43	Brush Holder PCB Screw	2
44	Motor Base Screw	3
45	Base Cover Washer	3
46	Base Cover Screw	3
47	Base Extension	1
48	Base Extension gasket	2
49	Base Extension Screw	2
50	Potentiometer	1
51	Potentiometer Bracket	1
52	Potentiometer Bracket Screw	2
53	Potentiometer Washer	3
54	Potentiometer Nut	1
55	Potentiometer Gear	1
56	Shaft Gear	1



PA-14P LINEAR ACTUATOR WITH POTENTIOMETER

HOW TO ORDER

1.800.676.6123

SALES@PROGRESSIVEAUTOMATIONS.COM

WWW.PROGRESSIVEAUTOMATIONS.COM

CUSTOM OPTIONS

- Voltage: 24/36/48
- IP Grade: IP65
- Feedback: Hall Effect Sensor
- Wire length: Customizable
- Stroke Size: 1" – 40" in increments of 0.25"
- Mounting Holes: Customizable size and Dimensions
- Connectors: Add your specific connector
- Custom Dimensions: Change size and stroke of unit based on your requirement
- Gearing: Full metal gears or plastic gears
- Customizable forces available: 110 lbs (no load speed 0.79"/sec, full load 0.59"/sec); 75 lbs (no load speed 0.95"/sec, full load 0.70"/sec)

**ADDITIONAL OPTIONS ARE ALWAYS BEING ADDED, PLEASE GIVE US A CALL
IF YOU NEED A CUSTOM OPTION YOU DO NOT SEE HERE 1-800-676-6123.**

3D MODEL (CLICK TO ACTIVATE)

