

www.sandemanyachtcompany.co.uk  
info@sandemanyachtcompany.co.uk

Telephone +44 (0)1202 330077  
Facsimilie +44 (0)1202 330060



## Sparkman & Stephens 60 ft Sloop 1939



### **KHAYYAM ex ZWERVER**

DESIGNER	Sparkman & Stephens No 273	BUILDER	Amsterdamsche Scheepswerf G. de Vries Lentsch, Amsterdam
DATE	1939	LOA	60 ft / 18.3 m
LWL	43 ft / 13.1 m	BEAM	12 ft 9 in / 3.9 m
DISPLACEMENT	30 tons / 30.5 tonnes	DRAFT	8 ft 9 in / 2.7 m
CONSTRUCTION	Teak and mahogany planking over composite frames	ENGINE	Perkins 4236 80 HP Diesel

**Price EUR 295,000**

## **BROKERS COMMENTS**

Sparkman & Stephens aficionados enthuse about this period 1930 to 1939 from the board of Olin Stephens - the quantum leaps of DORADE and STORMY WEATHER for offshore work and the purity of lines that later box rules rather diluted. The first ZWERVER (1938) was a sister ship of GOOD NEWS and two other American yachts EDLU II and CHUBASCO using the same model.

In the same ownership for the last 20 years, KHAYYAM, ex ZWERVER has cruised extensively as well as sailing in the classic regattas. A careful regime of maintenance by well known and respected shipwrights has enabled this yacht to sail more miles than many of her more delicate sisters she is an exciting prospect.

## **HISTORY**

ZWERVER was built for a Dutch gentleman Mr Van der Vorm, who intended to race her. Although pretty well completed in 1939, she was not launched until 1945. Sold on in 1952, her then new owner gave her a new name ACTEON and a new sailing series mainly in the Mediterrean - She was based in Algiers for some 15 years! Crossing the Channel in 1978 she has had several owners since then. In 1991 she was acquired by her current owner who has named her KHAYYAM in honour of the famous eleventh century Persian poet.

The boat has sailed extensively in the Atlantic, Caribbean and the Med both racing and cruising. She participated in the 2000 Paimpol to Reykjavik race coming 4th and again in 2006; 3rd overall but 1st in the first leg. Competing in the 2008 Transat Classique Lagassé, she came 8th and in the 2009 Antigua Classic, achieved 3rd place. She has regularly competed in the Classique Atlantique Challenge and Coupe des 2 Phares between Brest and La Rochelle; winning 3 times during the last 10 years.

## **CONSTRUCTION**

- Carvel teak and mahogany planking over composite frames
- Deck of teak planking over ply sub deck
- Mahogany superstructure and accommodation furniture

## **ACCOMMODATION AND DOMESTIC EQUIPMENT**

- The cockpit seating has substantial stowage below and on each side
- Access below is via the doghouse, over the engine casing
- Interior furnished in red mahogany with American cherry wood cabin sole
- Chart table with navigation instruments and drawers is to port with a seat to starboard
- Owners cabin with double berth, wash basin, lockers) fwd to port
- 2 quarter berths to starboard
- Fwd to port head compartment with shower, WC, medicine etc cabinet
- To starboard, galley with hob, oven and grill, sink hot & cold water stowage for dishes
- Main saloon cabin for 10 people green leather soft furnished
- Large rectangular table, bar, lockers
- To starboard 2 armchairs on each side of oil heater, bookshelves
- Fwd of mast to port a cabin with 2 berths, lockers, shelving
- To starboard 2 berths (formerly the galley)
- Sail locker fwd accessed from the crew cabin
- Focslie chain locker (230 ft / 70m chain)

## **RIG, SPARS AND SAILS**

- Mast and boom in Oregon pine 1995
- Spruce spars 1998 Labbé shipyard, St Malo
- Light genoa 90 sq m weight 250 gsm as new
- Genoa new 2012 on new furler 2013 90 sq m weight 380 gsm 2006- Yankee 65 sq m 2000
- Solent jib 35 sq m

- Storm jib
- Gennaker 140 sq m weight 150 gsm 1998
- Spinnaker 170 sq m weight 120 gsm 2010
- Light Spinnaker 170 sq m weight 40 gsm
- Mainsail 90 sq m weight 600 gsm for racing 2010
- Mainsail for cruising 2005
- Small mainsail 65 sq m 2000
- Storm sail

## **DECK EQUIPMENT AND GROUND TACKLE**

- Electric windlass 2000 W 2007
- 2 x 40 Kg anchors
- 12 mm anchor chain 70 m + 30 m
- 4 winches on the mast (of which 2 are ST)
- 2 winches on the deck (of which 1 is ST)
- 4 winches in cockpit (all ST)
- 2 x spruce spinnaker poles 1998
- Life raft for up to 10 persons
- Dinghy up to 6 persons 2010
- Covers for mainsail and genoa

## **MECHANICAL ELECTRICAL AND TANKAGE**

- Perkins 4236 80 HP engine 2002
- 2 x 24 V alternators
- Domestic batteries 370 A
- Engine start batteries 120 A
- Shore power 220 /24V
- Refrigerator 2010
- Cold and hot water by engine calorifier and 220V immersion heater
- Fresh water tanks 143 gallon / 650 Litres in 2 x stainless steel tanks 1993
- Fuel tank 55 gallon / 250Litres 1993
- Electrical circuitry and plumbing new in 1994

## **NAVIGATION COMMUNICATIONS AND ELECTRONICS**

- 3 x GPS of which 2 with chart plotters 1996 / 2003
- VHF Selected number call (SSN) with AIS receiver 2010
- Navtex
- B and G Autopilot 1995

## **SAFETY**

- Equipped to conform with regatta rules OSR 1

## **REFIT AND MAINTENANCE**

From 1991 to 2000 KHAYYAM underwent a substantial refit program

1. At Labbés shipyard at St Malo; the hull in 91 / 92, the mast (Oregon pine) 1995
2. At Rameaus shipyard at Etel; the deck in 95 and the interior 2000

Since then the boat has undergone regular maintenance every 3 years at the Chantier Y et Y in Douarnenez; the last works on the hull during the winter 2009 / 2010

Refit 2012 -13 at Y&Y including external varnishing

## **Disclaimer**

These particulars have been prepared from information provided by the vendors and are intended as a general guide. The purchaser should confirm details of concern to them by survey or engineers inspection. The purchaser should also ensure that the purchase contract properly reflects their concerns and specifies details on which they wish to rely.



## Sparkman & Stephens 60 ft Sloop 1939



## Sparkman & Stephens 60 ft Sloop 1939





## Sparkman & Stephens 60 ft Sloop 1939



## Sparkman & Stephens 60 ft Sloop 1939





## Sparkman & Stephens 60 ft Sloop 1939





## Sparkman & Stephens 60 ft Sloop 1939





## Sparkman & Stephens 60 ft Sloop 1939





## Sparkman & Stephens 60 ft Sloop 1939



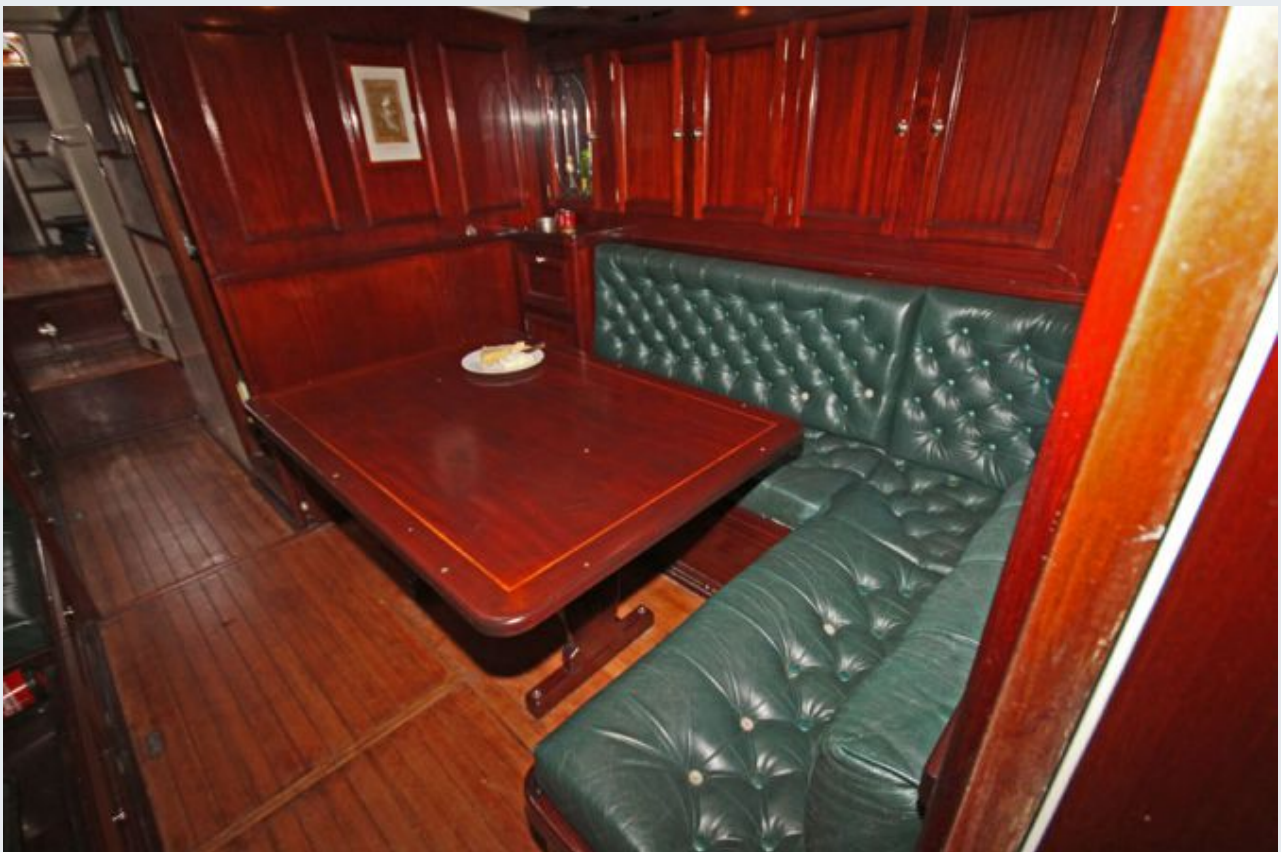


## Sparkman & Stephens 60 ft Sloop 1939





## Sparkman & Stephens 60 ft Sloop 1939





## Sparkman & Stephens 60 ft Sloop 1939

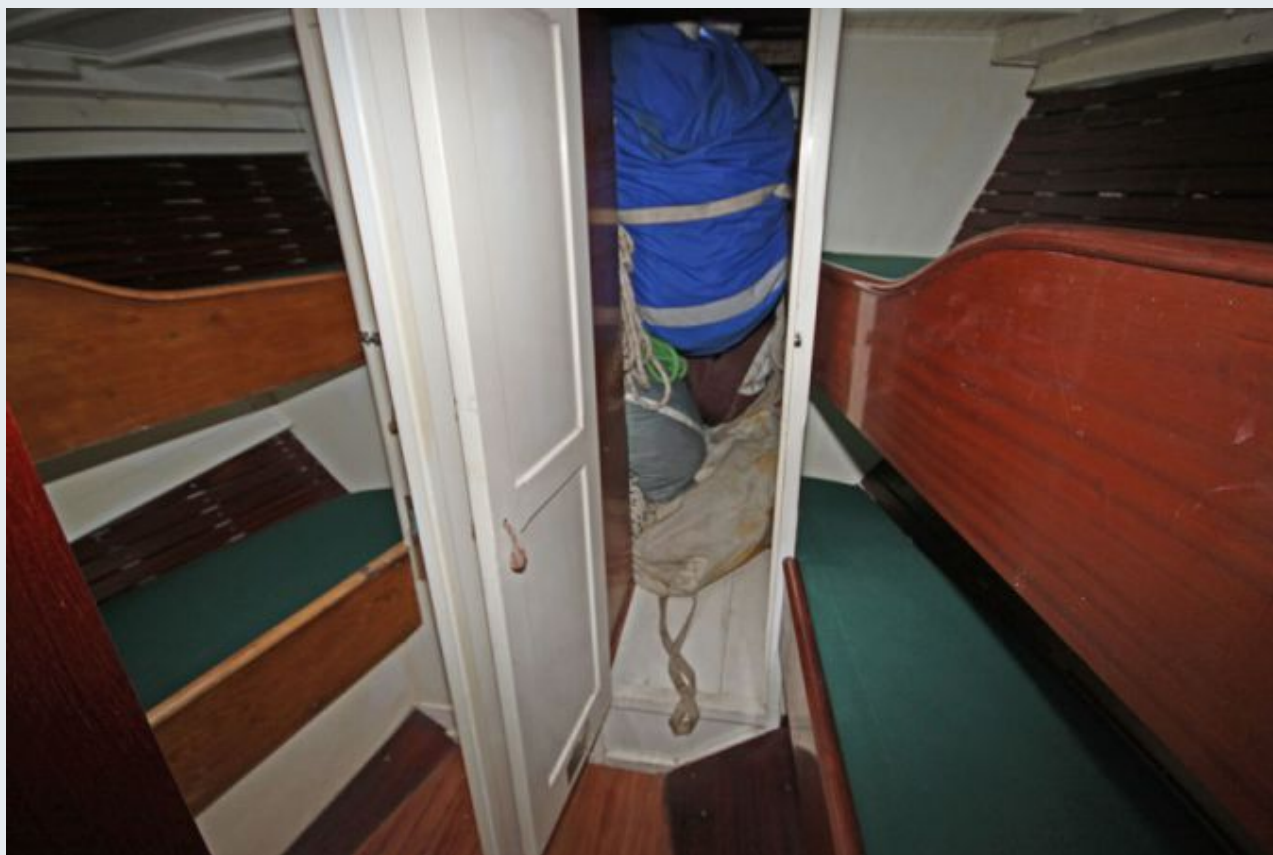


## Sparkman & Stephens 60 ft Sloop 1939





## Sparkman & Stephens 60 ft Sloop 1939





## Sparkman & Stephens 60 ft Sloop 1939



## Sparkman & Stephens 60 ft Sloop 1939

