



Sea - Seek

Ebook Sailing guide / Guide nautique

Irish sea

NE Atlantic Ocean

November 2018

Irish sea



Irish sea

Table of contents

Irish sea	1
1 - Craobh	1
2 - Kip Marina	2
3 - Rothesay Marina	3
4 - Largs Yacht Haven	3
5 - Fairlie Quay Marina	4
6 - Clyde Marina - Ardrossan	4
7 - Campbeltown	5
8 - Rathlin East (Altaca	6
9 - Rathlin West	6
10 - Rue Point	7
11 - Inishowen	7
12 - Maidens	8
13 - Chaines Tower	8
14 - Blackhead Antrim	9
15 - Mew Island	9
16 - Donaghadee	10
17 - Angus Rock	11
18 - Isle of Man	12
18.1 - Douglas harbour (Isle of Man)	13
18.2 - Castletown.....	14
19 - Barrow In Furness	15
20 - Warren Point	16
21 - Heysham	16
22 - Green Island	17

23 - Vidal Bank	17
24 - Haulbowline	18
25 - Dundalk	18
26 - Fleetwood Marina	19
27 - Rockabill	19
28 - Howth	20
29 - Baily	20
30 - Holyhead Marina	21
31 - Kish	21
32 - Dun Laoghaire West	22
33 - Dun Laoghaire East	22
34 - Muglins	23
35 - Wicklow Head	23
36 - Rosslare	24
37 - Tuskar	24
38 - Fishguard	25

Irish sea

54°01.07 N
4°39.49 W

NE Atlantic Ocean - Irish sea



1 - Craobh

56°12.71 N
5°33.49 W

NE Atlantic Ocean - Irish sea



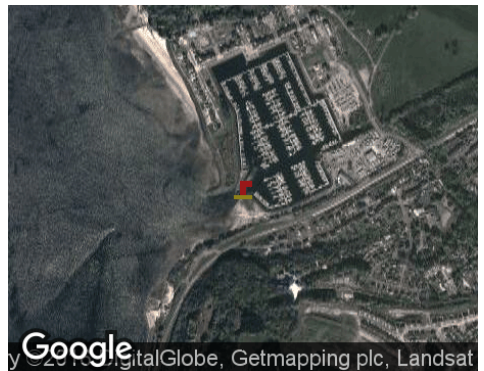


 Phone
 01852 500222
 Fax
 01852 500252

2 - Kip Marina

55°54.50 N
4°52.61 W

NE Atlantic Ocean - Irish sea






Webcam:

3 - Rothesay Marina

55°50.29 N
5°03.12 W

NE Atlantic Ocean - Irish sea



 Small port protected by a breakwater.

 Petit port protégé par une digue.

4 - Largs Yacht Haven

55°46.41 N
4°51.50 W

NE Atlantic Ocean - Irish sea



Port well sheltered by the Cumbrae Island.

5 - Fairlie Quay Marina

55°45.96 N
4°51.67 W

NE Atlantic Ocean - Irish sea



Fairlie Quay is situated on the southern shore of the Firth of Clyde south to the town of Largs .

T:+44 (0)1475 568267F:+44 (0)1475 568410

E:enquire@fairliequay.co.uk
W:www.fairliequay.co.uk
Contact:R Holmes
nice

6 - Clyde Marina - Ardrossan

55°38.46 N
4°49.14 W

NE Atlantic Ocean - Irish sea



7 - Campbeltown


55°25.46 N
5°36.07 W

NE Atlantic Ocean - Irish sea



2015:06:23 19:23:31

2015:06:23 19:20:21

 Campbeltown Marina is a brand new facility opened in June 2015 and is situated in the Town Centre at the head of the deep, sheltered waters of Campbeltown Loch on the Southeastern aspect of the Kintyre Peninsula. It is

within easy reach of the Antrim Coast, Ayrshire and the Upper Clyde.

Diesel is available at the Old Quay and gas is available across the road. Petrol is available a 5 minute walk away. A well stocked chandlers is situated in the town centre.

Campbeltown is the perfect 'getaway' destination with plenty to offer the whole family. Golf, cycling & walking routes, modern swimming pool and horse riding are some of the activities on offer.

Situated directly in the town centre there is a wide choice of shops, cafes, bars, restaurants and supermarkets within easy walking distance.

Campbeltown Airport with its scheduled flights to Gaslgow is a 10 minute taxi ride away. In summer months there is a car ferry link to Ardrossan and a passenger only fast ferry to Ballycastle and Islay.

Email - campbeltownmarina@btinternet.com

Tel; 07798 524 821

8 - Rathlin East (Altaca)

55°18.10 N
6°10.31 W

NE Atlantic Ocean - Irish sea



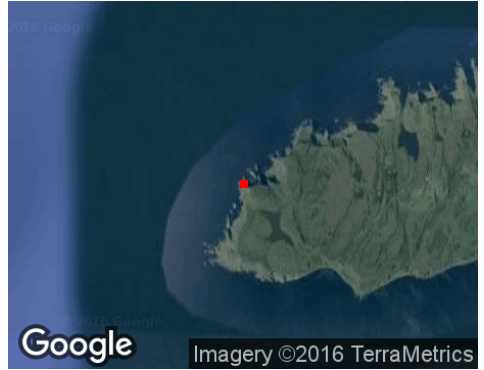
White tower black band. Character:FI (4) 20s

9 - Rathlin West

55°18.05 N
6°16.81 W

NE Atlantic Ocean - Irish sea





White tower lantern at base. Character:FI R 5s

10 - Rue Point

55°15.53 N
6°11.47 W

NE Atlantic Ocean - Irish sea



White 8-sided concrete tower black bands. Character:FI (2) 5s

11 - Inishowen

55°13.55 N
6°55.74 W

NE Atlantic Ocean - Irish sea





White tower 2 black bands. Character:FI (2) WRG 10s

12 - Maidens

54°55.74 N
5°43.70 W

NE Atlantic Ocean - Irish sea



White tower black band. Character:FI (3) 20s

13 - Chaine Tower

54°51.26 N
5°47.87 W

NE Atlantic Ocean - Irish sea





Grey tower. Character:Iso WR 5s

14 - Blackhead Antrim

54°46.01 N
5°41.33 W

NE Atlantic Ocean - Irish sea



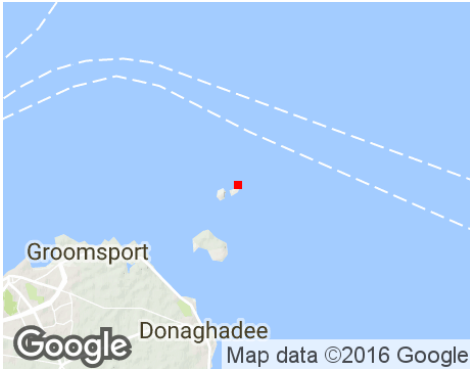
White 8-sided tower. Character:Fl 3s

15 - Mew Island

54°41.92 N
5°30.82 W

NE Atlantic Ocean - Irish sea





2007-03-18
 Bearing:270°
 Black tower white band. Character:Fl
 (4) 30s.
 Mew Island Lighthouse was established in 1884. The station was automated and keepers withdrawn in 1996.

What a lovely Lighthouse. It is such a pity that the foghorn is no longer operating (The morons!) At the the horn is still in place though. That's one piece of good news. Hope to hear it again soon!

16 - Donaghadee

54°38.70 N
 5°31.86 W

NE Atlantic Ocean - Irish sea



White tower. Character:Iso WR 4s

17 - Angus Rock

54°19.84 N
5°31.51 W

NE Atlantic Ocean - Irish sea



White tower Red Top. Character:FI R 5s

18 - Isle of Man

54°11.79 N
4°33.88 W

NE Atlantic Ocean - Irish sea - Isle of Man




A Castletown


B Douglas harbour (Isle of Man)



Isle of Man

 The Isle of Man is located in the Irish Sea at the geographical centre of the British Isles.

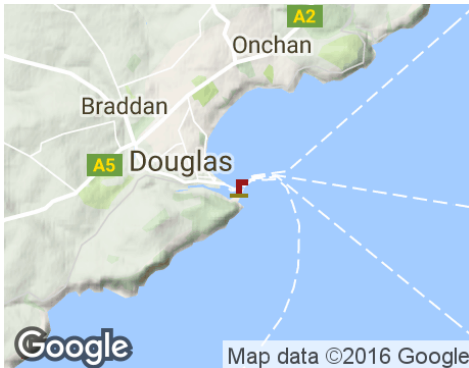
The head of state is Queen Elizabeth II, who holds the title of Lord of Mann. The Isle of Man is not a part of the European Union, but has a limited relationship relating to the free movement of goods.

 L'île de Man est formé d'une île principale et de quelques îlots situés en mer d'Irlande, au centre des îles Britanniques. L'île de Man forme une dépendance de la Couronne britannique, c'est-à-dire que l'île n'appartient ni au Royaume-Uni ni à l'Union européenne mais relève directement de la propriété du souverain britannique, actuellement la reine Elizabeth II. Ce statut n'en fait toutefois pas un État reconnu indépendant mais celui-ci dispose d'une large autonomie politique et économique.

18.1 - Douglas harbour (Isle of Man)

54°08.81 N
4°27.98 W

NE Atlantic Ocean - Irish sea - Isle of Man



next to the Inner Harbour Office



The inner harbour marina (accessible at approximately high water +/- 2 hours) is the main area for visiting leisure craft to berth but there are also berths in the outer harbour which are less dependent on the tides. A summer only pontoon is available for short periods at all states of tide at the Battery Pier (by No. 14 Berth)

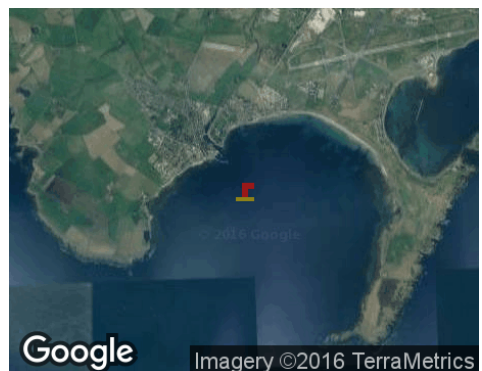
A slipway for the launching of small craft at all tidal states is situated next to the Fort Anne Jetty.

Entry to the Harbour is gained from the N.E. (heading 229) by leading marks (white opposing triangles) which are illuminated at night by flashing (occ 10s) white lights, now supplemented by red flashing opposing arrows. This approach will avoid possible overfalls at the end of the Breakwater The fairway is marked by two Starboard hand buoys (Q(3)G.5s) & (Fl.G3s) with, to Port, a concrete 'dolphin' (2F.red vert) which marks the end of the Breakwater. At the entrance, tides of up to 2 knots to the North East and South can be expected during flood and ebb tides respectively.

18.2 - Castletown

54°04.15 N
4°38.78 W


NE Atlantic Ocean - Irish sea - Isle of Man





Isle of Man

Castletown harbour Isle of Man
thumb

 Castletown is a heritage harbour consisting of outer and inner drying harbours. It is mainly used by inshore fishing vessels, local and visiting pleasure craft and occasional coasters.

Berths available

- * Moorings: One white can type mooring buoy is situated 3 cables SE of the Breakwater Head (water depth at least 4M) (seasonal).
- * Anchorage: SE of the Lheeah Rio bell buoy between 13M and 18M of water.
- * Slipway: There are three, half tide slipways.

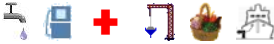
On approach it is important to pass the red Can buoy (Fl.R 3s) which marks the Lheeah rio rocks, to port. The Breakwater Head lighthouse (white tower Red band Oc.R 15s) transit with the Irish Quay lighthouse (white tower red band Oc.R 4s) lead at approx. 323 degrees. It is advisable to pass to the North East of this transit to pass clear of a training wall from the Breakwater Head.

19 - Barrow In Furness

54°06.44 N
3°13.51 W

NE Atlantic Ocean - Irish sea





🇬🇧 Harbor and shipyard.

🇫🇷 Port de commerce et chantier naval.

20 - Warren Point

54°05.93 N
6°15.43 W

NE Atlantic Ocean - Irish sea



🇬🇧 Small port.

🇫🇷 Petit port côtier.


21 - Heysham

54°02.07 N
2°54.83 W

NE Atlantic Ocean - Irish sea





 Small port protected by a breakwater.

 Petit port protégé par une digue.

22 - Green Island

54°01.95 N
6°05.75 W

NE Atlantic Ocean - Irish sea



Red triangle t and white lantern on framework tower. Character:Oc 3s

23 - Vidal Bank

54°01.79 N
6°05.43 W

NE Atlantic Ocean - Irish sea





Red triangle s and white lantern on framework tower. Character:Oc 3s

24 - Haulbowline

54°01.19 N
6°04.73 W

NE Atlantic Ocean - Irish sea



Grey granite tower. Character:Fl (3) 10s

25 - Dundalk

53°58.56 N
6°17.71 W

NE Atlantic Ocean - Irish sea





White house on green piles. Character:FI WR 15s

26 - Fleetwood Marina

53°54.84 N
3°00.89 W

NE Atlantic Ocean - Irish sea



lush picture



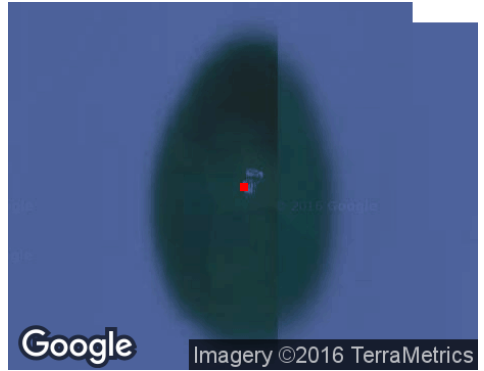
 Port.

 Port.

27 - Rockabill

53°35.81 N
6°00.29 W

NE Atlantic Ocean - Irish sea

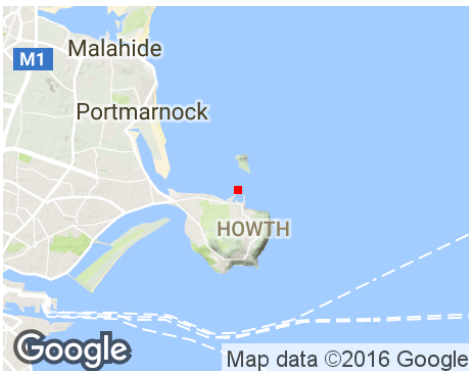


White tower black band. Character:FI WR 12s

28 - Howth

53°23.64 N
6°04.01 W

NE Atlantic Ocean - Irish sea



White concrete pillar

29 - Baily

53°21.68 N
6°03.15 W

NE Atlantic Ocean - Irish sea





Granite tower. Character:FI 15s

30 - Holyhead Marina

53°19.24 N
4°38.60 W

NE Atlantic Ocean - Irish sea



🇬🇧 Port protected by a breakwater.

🇫🇷 Port protégé par une digue.

31 - Kish

53°18.64 N
5°55.54 W

NE Atlantic Ocean - Irish sea





White concete tower red band. Character:FI (2) 20s

32 - Dun Laoghaire West

53°18.19 N
6°07.85 W

NE Atlantic Ocean - Irish sea



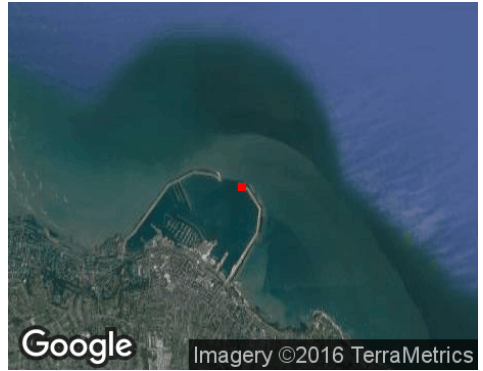
Granite tower green lantern. Character:FI (3) G 8s

33 - Dun Laoghaire East

53°18.15 N
6°07.62 W

NE Atlantic Ocean - Irish sea



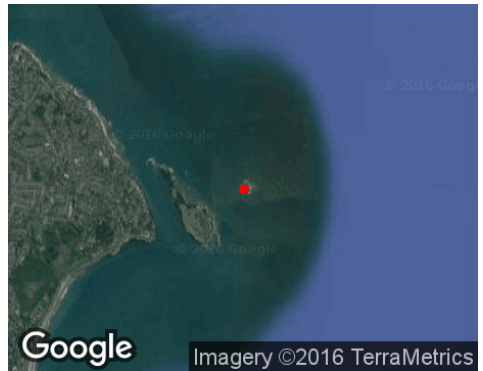


Granite tower red lantern. Character:Fl (2) R 10s

34 - Muglins

53°16.52 N
6°04.57 W

NE Atlantic Ocean - Irish sea



White conical tower red band. Character:Fl 5s

35 - Wicklow Head

52°57.94 N
5°59.88 W

NE Atlantic Ocean - Irish sea





White tower. Character:FI (3) 15s

36 - Rosslare

52°15.30 N
6°20.21 W

NE Atlantic Ocean - Irish sea



🇬🇧 Port protected by a breakwater.

🇫🇷 Port protégé par une digue.

37 - Tuskar

52°12.17 N
6°12.44 W

NE Atlantic Ocean - Irish sea



White tower. Character:Q(2) 7.5s

38 - Fishguard

52°00.74 N
4°58.69 W

NE Atlantic Ocean - Irish sea



🇬🇧 Port protected by a breakwater.

🇫🇷 Port protégé par une digue.

www.sea-seek.com

Responsability

Sea-Seek is a collection of sailing logbooks covering harbours, anchorages, diving spots... any subject regarding sport or pleasure at sea.

Sea-Seek is an online open-content collaborative pilot guide, that is, a voluntary association of individuals and groups working to develop a common resource of human knowledge. The structure of the project allows anyone with an Internet connection to alter its content. Please be advised that nothing found here has necessarily been reviewed by people with the expertise required to provide you with complete, accurate or reliable information.

In particular, don't use any map presented in Sea-Seek for the navigation.

Note that informations in sea-seek are compiled from a variety of freely available and non controlable sources and therefore Sea-Seek webmaster cannot be held responsible for incorrect or outdated data.

Responsabilité

Sea-Seek est un guide du nautisme ou pilote côtier en ligne. Fruit de la contribution de chacun, il décrit les sites de mouillage, les ports, les spots de plongée, les plages par et pour les amoureux de la mer.

Sea-Seek est un guide nautique libre, c'est-à-dire une association volontaire d'individus et de groupes qui développent ensemble une source de la connaissance humaine. Sa structure permet à tout individu avec un accès Internet et un navigateur Web de modifier le contenu disponible ici. En conséquence, sachez que rien de ce que vous pouvez trouver ici n'a été nécessairement vérifié par un professionnel compétent dans le domaine en question et ceci sur tous les sujets de Sea-Seek.

En particulier, n'utiliser aucune carte de Sea-Seek pour la navigation.

L'ensemble des données présentées sur Sea-Seek sont d'origines diverses et non contrôlées et ne sauraient engager la responsabilité du responsable du site www.sea-seek.com.